



CAPSTREND

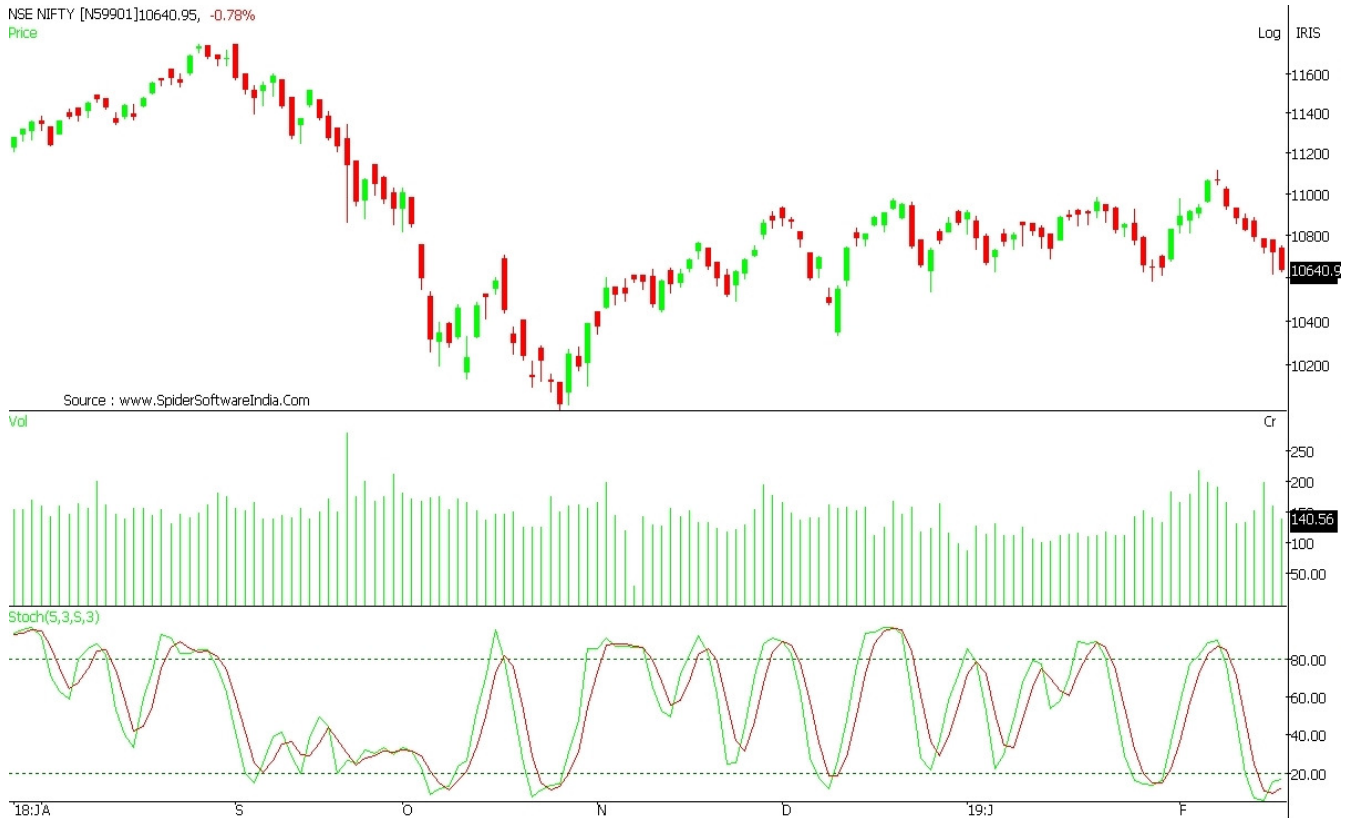
Daily Market Perspective



19 February 2019

www.capstocksiindia.com

CNXNIFTY



Yesterday nifty opened in a flat note and was in the hands of bear throughout the day. In the opening hour nifty showed a open around 10750 zone and started declining. This made the index to lose some 100 points from the high point of the day. As of now nifty is in a range of 300 points with 10600 and 10900 as support and resistance respectively. At the closing bell, the BSE Sensex stood lower by 311 points (down 0.9%) and the NSE Nifty closed down by 83 points (down 0.8%). The BSE Mid Cap index and the BSE Small Cap index ended the day down by 1%. Barring telecom sector and realty sector, all sectoral indices ended on a negative note with energy stocks, consumer durables stocks, and FMCG stocks losing the most. The market breadth, indicating the overall health of the market, was negative On NSE, 570 shares rose and 1143 shares fell. A total of 74 shares were unchanged. Resistance 10723-10806-10826-10874-10937 and Support a 10592-10544-10495-10450-10413. Today market expected to open in flat note.

	<table border="1"> <tr><td>R1</td><td>10806</td></tr> <tr><td>R2</td><td>10874</td></tr> <tr><td>R3</td><td>10937</td></tr> </table>	R1	10806	R2	10874	R3	10937	<table border="1"> <tr><td>S1</td><td>10544</td></tr> <tr><td>S2</td><td>10495</td></tr> <tr><td>S3</td><td>10450</td></tr> </table>	S1	10544	S2	10495	S3	10450	
	R1	10806													
	R2	10874													
R3	10937														
S1	10544														
S2	10495														
S3	10450														

INDEX WATCH**VOLUME**

Index	Close Value	Change	Change%
Sensex	35547.58	-261.37	-0.73
Nifty 50	10640.95	-83.45	-0.78
Nifty Bank	26654.25	-140.00	-0.52
Nifty IT	15659.00	-156.60	-0.99

Market Segment	in Cr
NSE CASH	29294
NSE F&O	549544
BSE	3545
TOTAL	582383

GLOBAL MARKET**FII Net**

Index	Close Value	Change	Change%
DOW		Holiday	
NASDAQ		Holiday	
Nikkei	21297.67	+15.82	+0.07
HangSeng	28450.80	+103.71	+0.37

FII Net Investments	in Cr
18 Feb 2019	-1240
15 Feb 2019	-966
14 Feb 2019	-250
13 Feb 2019	-676
12 Feb 2019	-466

*Provisional Data

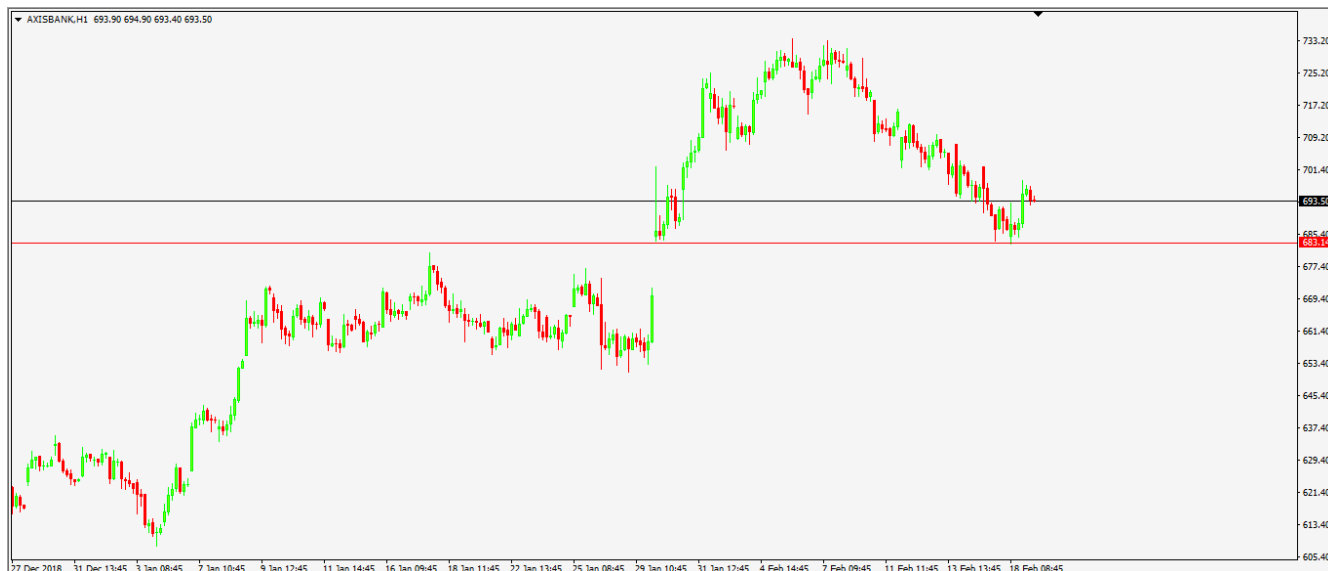
CURRENCY FUTURE**Crude Oil**

Currency	Open	Close	RBI reference rate
1 USD	71.3200	71.4175	71.4705
1 GBP	91.8000	92.4300	92.2689
1 EUR	80.7825	80.9625	80.8117
100 JPY	64.6350	64.6700	64.6400

66.20	-0.30	-0.45
--------------	--------------	--------------

NIFTY GAINERS			NIFTY LOSERS		
Company	Price	Chg (%)	Company	Price	Chg (%)
INFRATEL	316.5	3.13	IBULHSGFIN	617	-3.5
ONGC	137.15	1.59	TCS	1969.6	-2.96
ZEEL	437.85	1.51	RELIANCE	1215.65	-2.31
TATAMOTORS	163.1	0.9	BAJAJFINSV	5886	-2.31
AXISBANK	692.4	0.84	YESBANK	214	-2.28

Stocks Technical View



This is a chart of Axisbank. The stock is trading near the support and is expected to hit the target 740 in a short span of time.

MARKET NEWS

Results on February 19: Valecha Engineering, Asahi Industries, Linde India, Imec Services, Shailja Commercial Trade.

Cyient: Company launched its connected equipment offering for OEMs and equipment owners and operators.

Gokaldas Exports: Company entered into a Memorandum of Understanding with Government of Karnataka for setting up apparel manufacturing units over a period of next five years in Ballary district involving an investment of approximate up to Rs 80 crore.

Infosys paid a settlement amount of Rs 34.35 lk in respect of settlement

Emami Group promoters divest 10% stake for Rs 1600 crore in Emami

Mindtree - IT Dept withdraws provisional attachment order for the transfer or charge of 22,20,000 and 52,70,000 equity shares of Mindtree by Coffee Day Enterprises and V G Siddhartha, held by them respectively

NLC India joins hands with NHPC on power trading

IL&FS Transportation Networks: Interest due and payable on February 18 on the NCD was not paid to the debenture holders due to insufficient funds.

Bodal Chemicals: Company has restarted remaining of dye intermediate and dyestuff operations.

Ambuja Cements December quarter: Consolidated profit jumps to Rs 1,378 crore versus Rs 478 crore on tax credit; revenue Rs 6729 crore versus Rs 6173 crore YoY. Board recommended a final dividend on equity shares at the rate of Rs 1.50 per share.

Equity Pivot for Nifty Stocks

SYMBOL	CLOSE	R3	R2	R1	Pivot	S1	S2	S3
ADANIPTS	347.30	363.28	355.93	351.62	348.58	344.27	341.23	333.88
ASIANPAINT	1380.05	1488.98	1432.28	1406.17	1375.58	1349.47	1318.88	1262.18
AXISBANK	693.30	724.57	707.57	700.43	690.57	683.43	673.57	656.57
BAJAJ-AUTO	2793.50	2933.17	2865.97	2829.73	2798.77	2762.53	2731.57	2664.37
BAJAJFINSV	5885.15	6388.25	6165.55	6025.35	5942.85	5802.65	5720.15	5497.45
BAJFINANCE	2549.45	2638.07	2589.52	2569.48	2540.97	2520.93	2492.42	2443.87
BHARTIARTL	302.55	317.45	310.35	306.45	303.25	299.35	296.15	289.05
BPCL	327.75	341.90	334.35	331.05	326.80	323.50	319.25	311.70
CIPLA	541.15	565.00	552.25	546.70	539.50	533.95	526.75	514.00
COALINDIA	215.15	222.38	219.18	217.17	215.98	213.97	212.78	209.58
DRREDDY	2565.55	2889.28	2744.68	2655.12	2600.08	2510.52	2455.48	2310.88
EICHERMOT	20155.20	21022.23	20619.93	20387.57	20217.63	19985.27	19815.33	19413.03
GAIL	317.45	336.90	326.65	322.05	316.40	311.80	306.15	295.90
GRASIM	699.85	738.17	720.02	709.93	701.87	691.78	683.72	665.57
HCLTECH	1046.30	1129.27	1089.77	1068.03	1050.27	1028.53	1010.77	971.27
HDFC	1874.85	1935.20	1906.25	1890.55	1877.30	1861.60	1848.35	1819.40
HDFCBANK	2089.90	2161.97	2129.97	2109.93	2097.97	2077.93	2065.97	2033.97
HEROMOTOCO	2683.55	2771.87	2727.42	2705.48	2682.97	2661.03	2638.52	2594.07
HINDALCO	184.55	195.32	190.52	187.53	185.72	182.73	180.92	176.12
HINDPETRO	212.65	223.70	218.55	215.60	213.40	210.45	208.25	203.10
HINDUNILVR	1751.90	1834.20	1794.10	1773.00	1754.00	1732.90	1713.90	1673.80
IBULHSGFIN	623.50	698.10	663.70	643.60	629.30	609.20	594.90	560.50
ICICIBANK	338.75	350.67	345.22	341.98	339.77	336.53	334.32	328.87
INDUSINDBK	1517.00	1563.77	1538.87	1527.93	1513.97	1503.03	1489.07	1464.17
INFRATEL	317.05	342.77	328.22	322.63	313.67	308.08	299.12	284.57
INFY	741.05	764.87	753.22	747.13	741.57	735.48	729.92	718.27
IOC	124.95	130.40	127.85	126.40	125.30	123.85	122.75	120.20
ITC	274.70	294.12	285.57	280.13	277.02	271.58	268.47	259.92
JSWSTEEL	261.90	282.18	273.23	267.57	264.28	258.62	255.33	246.38
KOTAKBANK	1277.05	1308.93	1294.18	1285.62	1279.43	1270.87	1264.68	1249.93
LT	1244.50	1287.12	1267.57	1256.03	1248.02	1236.48	1228.47	1208.92
M&M	624.70	652.23	637.83	631.27	623.43	616.87	609.03	594.63
MARUTI	6842.70	7247.43	7066.63	6954.67	6885.83	6773.87	6705.03	6524.23
NTPC	137.45	148.50	143.05	140.25	137.60	134.80	132.15	126.70
ONGC	137.10	143.47	140.37	138.73	137.27	135.63	134.17	131.07
POWERGRID	180.75	189.17	185.22	182.98	181.27	179.03	177.32	173.37
RELIANCE	1220.10	1304.20	1266.70	1243.40	1229.20	1205.90	1191.70	1154.20
SBIN	259.95	274.82	268.12	264.03	261.42	257.33	254.72	248.02
SUNPHARMA	414.65	448.05	433.35	424.00	418.65	409.30	403.95	389.25
TATAMOTORS	162.90	170.35	166.10	164.50	161.85	160.25	157.60	153.35
TATASTEEL	465.55	494.18	481.58	473.57	468.98	460.97	456.38	443.78
TCS	1970.30	2150.23	2070.93	2020.62	1991.63	1941.32	1912.33	1833.03
TECHM	803.45	851.65	830.15	816.80	808.65	795.30	787.15	765.65
TITAN	1027.35	1068.47	1049.12	1038.23	1029.77	1018.88	1010.42	991.07
ULTRACEMCO	3429.25	3580.75	3501.75	3465.50	3422.75	3386.50	3343.75	3264.75
UPL	821.85	867.20	843.25	832.55	819.30	808.60	795.35	771.40
VEDL	148.00	157.60	153.10	150.55	148.60	146.05	144.10	139.60
WIPRO	375.60	391.15	383.10	379.35	375.05	371.30	367.00	358.95
YESBANK	213.55	241.82	226.12	219.83	210.42	204.13	194.72	179.02
ZEEL	438.95	470.17	452.52	445.73	434.87	428.08	417.22	399.57

Mutual Fund Recommendations	
Equity	ELSS (Tax Saving)
AdityaBirla Sun Life Frontline Equity Fund	Axis Long Term Equity Fund
ICICI Prudential Bluechip Fund	Franklin India Tax shield
ICICI Prudential Value Discovery Fund	
L&T Value Fund	
HDFC Small Cap Fund	

Disclaimer: This Document is for private circulation and for information purposes only. It does not have regard to the specific investment objectives, financial situation and the particular needs of any specific person who may receive this report. Investors should seek financial advice regarding the appropriateness of investing in any securities or investment strategies discussed or recommended in this report and should understand that statements regarding future prospects may not be realized. In no circumstances it be used or considered as an offer to sell or a solicitation of any offer to buy or sell the Securities mentioned in it. Please note that Capstocks, its directors and associates may have trading or investment positions in the securities mentioned herein
 !.....